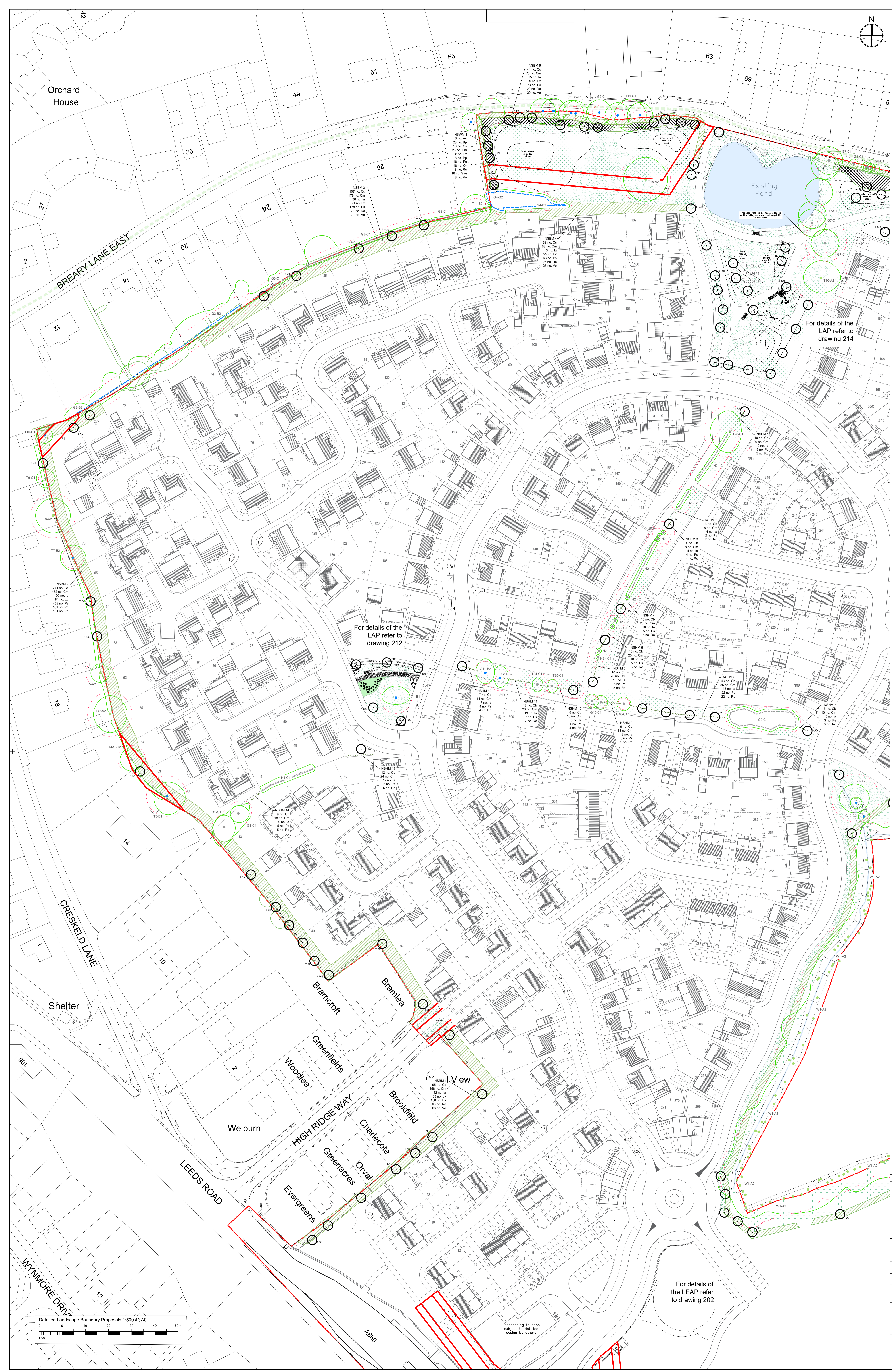


NOTES
 All scales are in millimetres unless stated otherwise.
 All dimensions are in millimetres unless stated otherwise.
 The drawing is the property of Lanpro and shall not be used for any other purpose without the written consent of Lanpro.
 This drawing is the property of Lanpro and shall not be used for any other purpose without the written consent of Lanpro.
 © Lanpro 2014
 Drawing No: 3642-00-204-J



KEY

- Green Area
- Planting Area
- Planting Boundary
- Planting Code
- Planting Species
- Planting Species Buffer
- Planting Species Hedge

PLANTING SCHEDULE

To be planted as per Landscape Architects specification

Code: Species

A1: Acer compansum
 A2: Acer palmatum 'Emperor's Queen'
 B1: Betula pendula
 B2: Betula pubescens
 C1: Cornus alternifolia
 C2: Cornus sibirica
 D1: Prunus avium
 D2: Prunus domestica 'Champion'
 E1: Quercus robur
 E2: Quercus petraea
 F1: Taxus baccata
 F2: Taxus canadensis
 G1: Tilia cordata
 G2: Tilia platyphyllos

Prepared Native Species Buffer (NSM) - 1:1 ratio

Code: Species

A1: Acer compansum
 A2: Acer palmatum
 B1: Betula pendula
 B2: Betula pubescens
 C1: Cornus alternifolia
 C2: Cornus sibirica
 D1: Prunus avium
 D2: Prunus domestica
 E1: Quercus robur
 E2: Quercus petraea
 F1: Taxus baccata
 F2: Taxus canadensis

Prepared Native Species Hedge (NSM) - 5:1 ratio

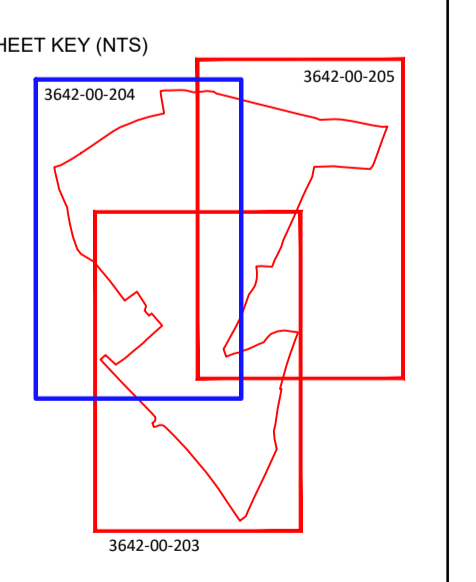
Code: Species

A1: Acer compansum
 A2: Acer palmatum
 B1: Betula pendula
 B2: Betula pubescens
 C1: Cornus alternifolia
 C2: Cornus sibirica
 D1: Prunus avium
 D2: Prunus domestica
 E1: Quercus robur
 E2: Quercus petraea
 F1: Taxus baccata
 F2: Taxus canadensis

Prepared Native Species Hedge (NSM) - 5:1 ratio

Code: Species

A1: Acer compansum
 A2: Acer palmatum
 B1: Betula pendula
 B2: Betula pubescens
 C1: Cornus alternifolia
 C2: Cornus sibirica
 D1: Prunus avium
 D2: Prunus domestica
 E1: Quercus robur
 E2: Quercus petraea
 F1: Taxus baccata
 F2: Taxus canadensis



REVISIONS

NO	DESCRIPTION	DATE
1	Issue for Planning Submission	14/11/2014

FOR PLANNING SUBMISSION

PROJECT TITLE: Study Lane, Brampton

SCALE: 1:500

DATE: 14/11/2014

DRAWN BY: JMT

CHECKED BY: JMT

APPROVED BY: [Signature]

