

Newsletter



 @ConnectingLeeds  @ConnectingLeeds  www.leeds.gov.uk/ArmleyGyratory  Connectingleeds@leeds.gov.uk

Project Introduction

Armley Gyratory is a key junction on the Inner Ring Road to the west of Leeds city centre. It is a major entry/exit point for traffic travelling through and into the city with an estimated 100,000 vehicles passing through daily.

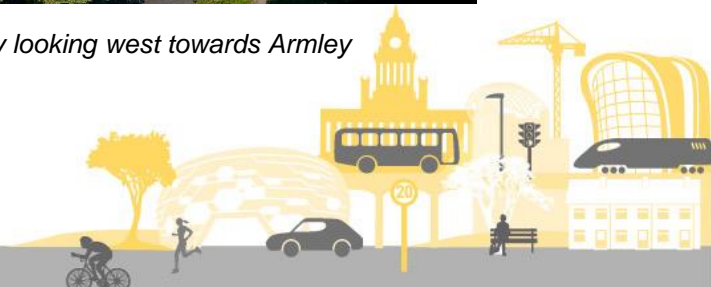
Improvements to the gyratory aim to:

- Improve safety for all road users
- Allow traffic to flow more freely, minimising traffic impacts on local roads
- Provide more appealing and accessible routes for pedestrians and people who cycle
- Help facilitate improvements elsewhere in the city, like closing City Square to vehicles
- Improve the local environment through new landscaping

This project is part of Connecting Leeds' work on several major highways schemes, which are all part of transforming travel in the city and across the district.



Sept 2023- Aerial photo of Armley Gyratory looking west towards Armley



The story so far

At the end of September, Phase two of the Armley Gyratory project commenced with the demolition of the Spence Lane footbridge. Over one weekend, four 1970's post tensioned concrete beams weighing between 30T-47T were removed using a 1000T mobile crane. The four beams were driven out by police escort from the city centre in the early hours of the morning to be processed offsite, where the majority of the debris will be recycled. The demolition was completed ahead of schedule, allowing the gyratory to be fully opened to the public early. To watch the video documenting the demolition, please scan the QR code.



Scan to watch!

Following the removal of the footbridge, the foundations and remaining concrete columns were also broken down and removed, allowing for the commencement of the new bridge works.

The new Spence Lane footbridge will have a more gradual incline up to the bridge and a wider bridge deck, better meeting the needs of all non-motorised users travelling around the gyratory. The bridge has also been designed so it will require less maintenance in the future.

Other recent milestones on the project include the completion of street light ducting and the installation of the permanent traffic lights around the gyratory, improving safety for all drivers. The traffic signals are equipped with MOVA technology which alters waiting times based on traffic flow and levels, improving congestion and wait times during quieter periods.

Landscaping works have also begun around the gyratory, with a programme of tree planting scheduled throughout the winter season, around the gyratory itself and at offsite locations around Leeds. One of these offsite planting events took place on Colton Lane in Temple Newsam in mid-November, with the local Cubs group helping the Leeds Countryside Rangers get some of the first trees of the season planted. Leeds City Council and West Yorkshire Combined Authority employees also volunteered their time to plant tree whips around the gyratory in mid- December, as part of the extensive planting taking place. Approximately 350 trees are planned to be planted this planting season, with more trees to follow next year!





One of the post tensioned concrete beams that formed part of the Spence Lane Footbridge being removed.



Aerial view of the gyratory, looking south, with the crane used in the demolition of Spence Lane footbridge in situ





Specialised removal vehicles wait to remove the old bridge beams from site.



Ingram Distributor (north bound) without a footbridge, ready for construction to begin on the new one.



What happens next?

As works progress on building the new **Spence Lane footbridge**, the **Gelderd Road footbridge** over Ingram Distributor (south bound) to the east of the Spence Lane footbridge is also due to be replaced.

Scheduled for 8PM 12 January – 5:30AM 15 January 2024, Gelderd Road footbridge is due to be removed and replaced in one weekend.

The new bridge will have improved accessibility with wider footpaths (4.0m) enhancing accessibility and safety for all non-motorised users. The eastern access to the Gelderd Road footbridge is being widened to a 3.0m shared-use footpath, including provision for two new rest areas further contributing to improved accessibility. The replacement bridge has been designed to minimise the need for maintenance over the next century, showcasing a commitment to sustainability and longevity.



Gelderd Road Footbridge – Indicative visual provided by Aecom

The replacement of the bridge will then take place over the weekend of 12 January –15 January 2024, requiring a partial closure of the gyratory. Wellington Road (A58) south bound, the south east of the gyratory and Ingram Distributor (south bound) will be closed to motorists whilst the work is complete. Clearly signed vehicle and pedestrian diversion routes will be in place, and all diversion maps can be found on www.leeds.gov.uk/armleygyratory and on the following pages (please see the red pedestrian diversion route on the Armley Gyratory Footpath Closures map).



Please search Plan Ahead Leeds or visit www.leeds.gov.uk/planahead, visit www.leeds.gov.uk/armleygyratory or follow Connecting Leeds on social media for up to date information on the scheduled partial closure details.

Please note that this work schedule and activity is weather dependant which could change or delay work taking place.

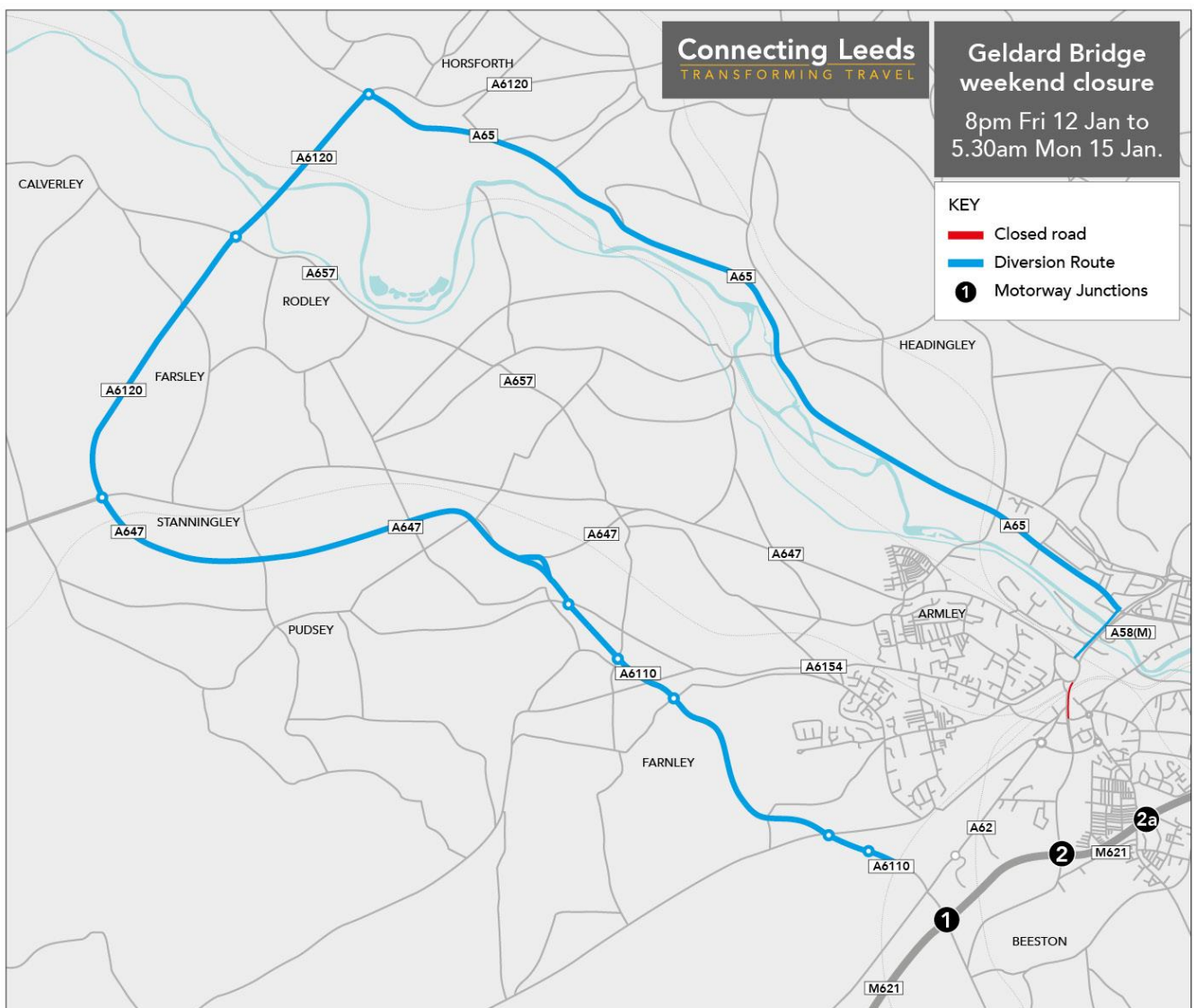
We apologise for any inconvenience during the works and would like to thank all local residents for their ongoing patience as we work to improve journeys around the gyratory for everyone.

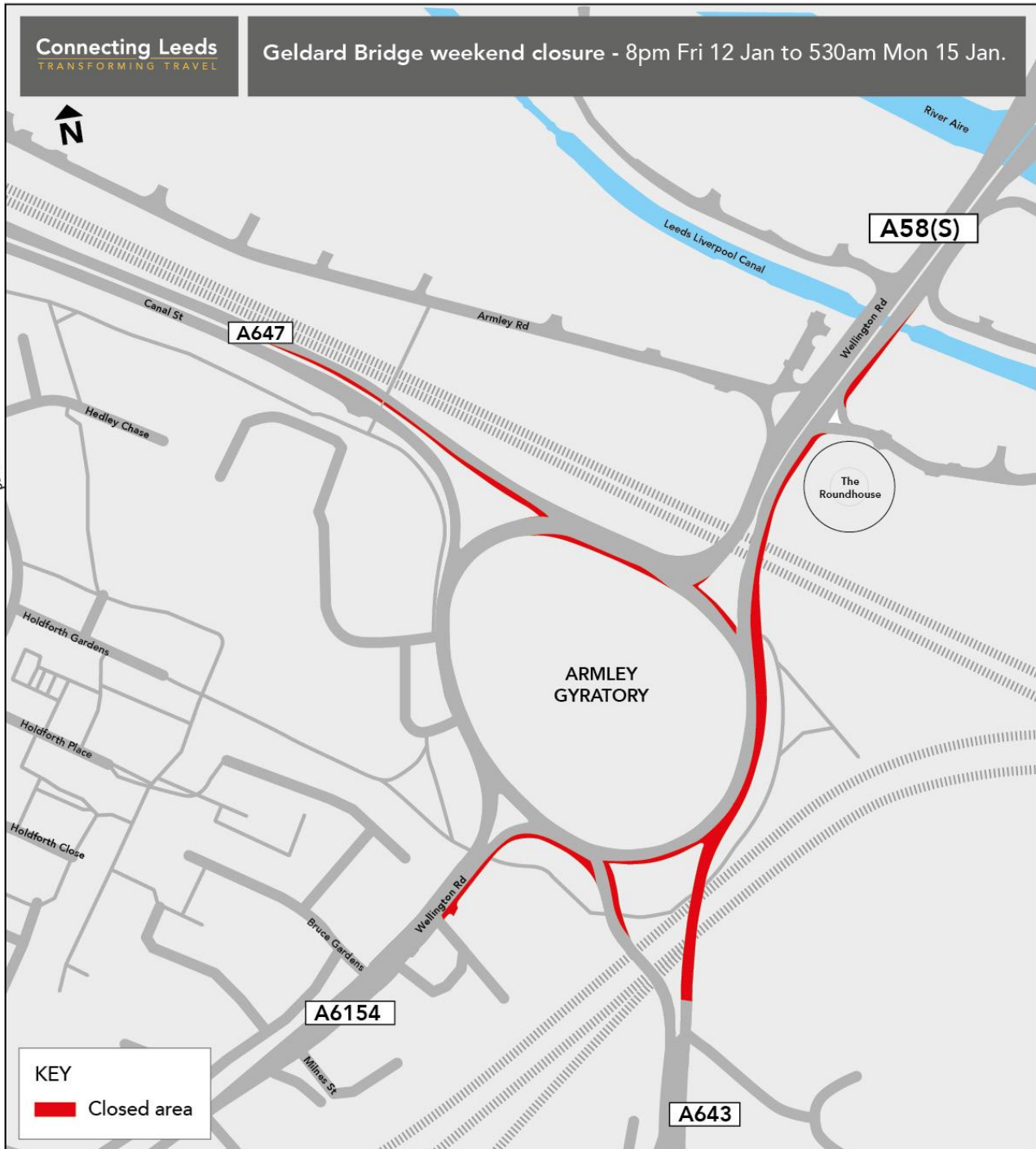
The current phase two Armley structure programme:

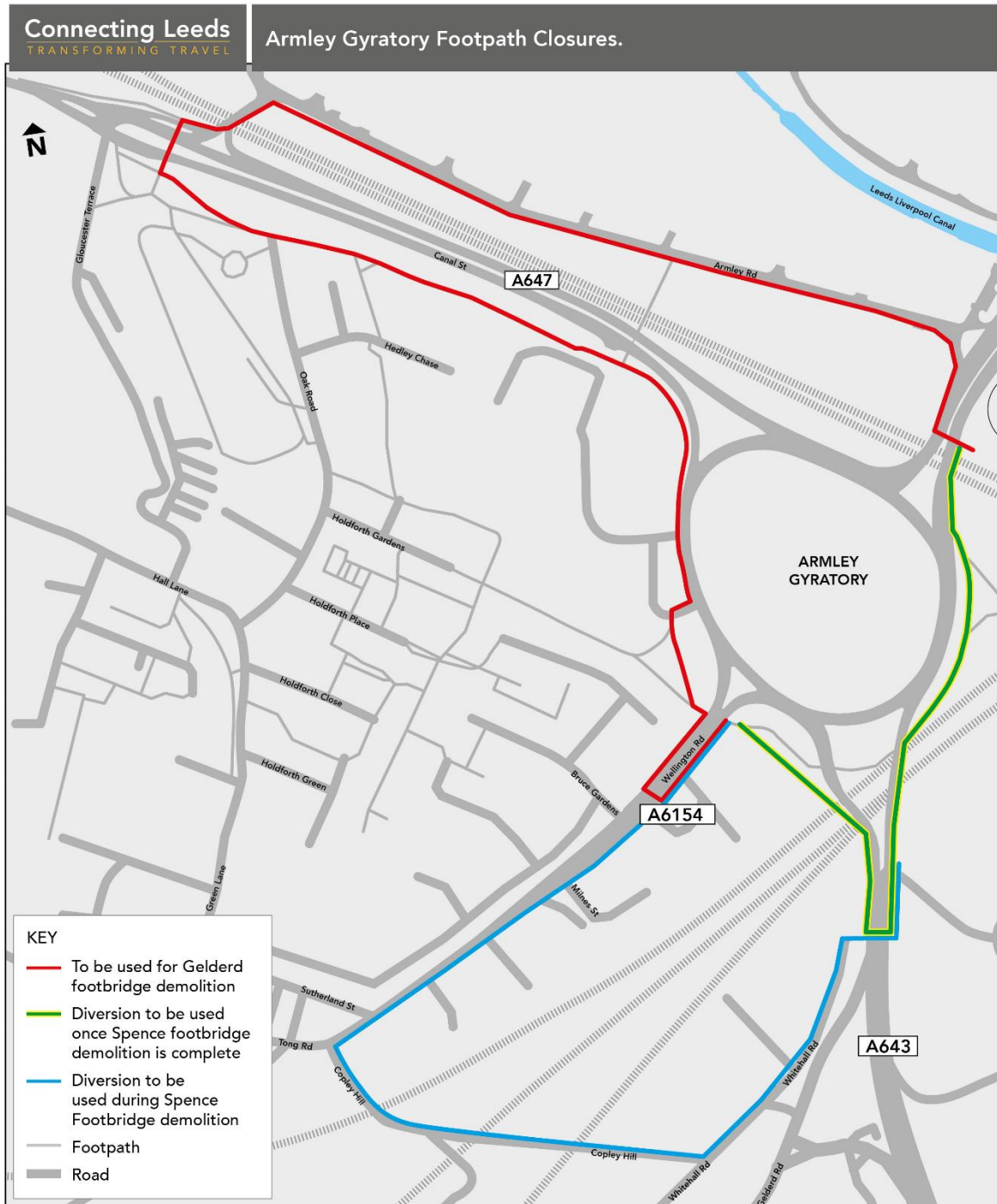
Spence Bridge (2a) October 2023 (preparation & groundworks) – Spring/Summer 2024 bridge construction.

Geldard Bridge (2a) January - Spring 2024 – plans for removal and construction over single-weekend with finishing works and landscaping following.

Wellington Road Bridge (2b) removal and construction anticipated Summer 2024.







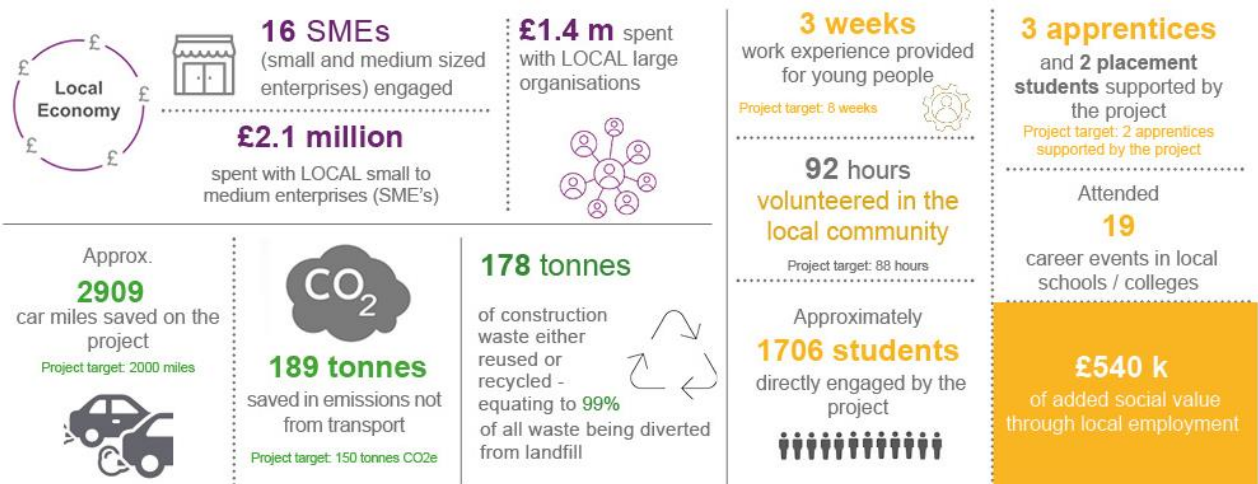
Social value updates

SOCIAL VALUE ADD | Amley Gyratory

Amley Gyratory improvements are being delivered by Leeds City Council in partnership with the West Yorkshire Combined Authority. The scheme is a key junction on the A58 (M) Inner Ring Road with approximately 100,000 cars using the roundabout everyday. The project aims to improve the efficiency of the roundabout, creating a safer environment for all road users including cyclists and pedestrians. New landscaping will also aim to improve biodiversity and air pollution in the area. Balfour Beatty, Leeds City Council and the team of subcontractors are collaborating to maximise social value engagement with residents, businesses, community groups and education establishments.



**Estimated Total Social Value Add:
£4.2 million**

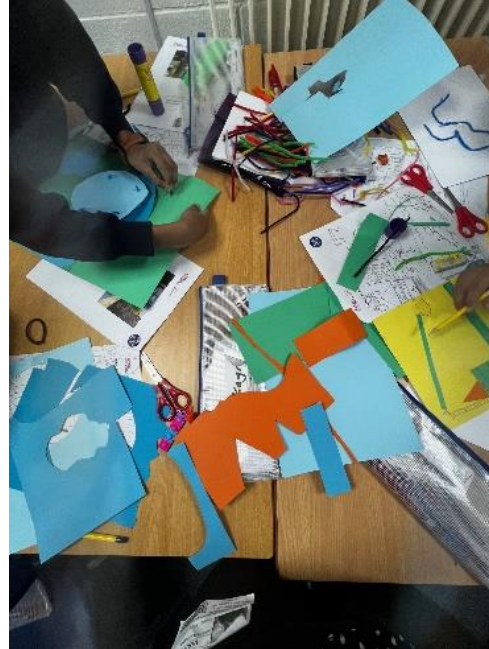


Since February 2022, the Amley Gyratory team has been visiting local schools, primary and secondary, to talk about careers in construction and to help pupils gain confidence and an understanding of the range of opportunities available within the construction industry. So far on the project, we have directly engaged with approximately 1700 students in Leeds.

Over the last few months, we have continued our focus on helping to raise students' aspirations and awareness of the opportunities available to them by attending career events within local schools. Since September, we have visited two local primary schools, sharing our children's book with one school and taking part in LEEDS 2023's Smeaton300 STEM day at the other. We have also engaged with The Prince's Trust's 'Team Programme', helping to get young people currently not in education, employment or training ready for work, with CV and interview advice.



We have also hosted a total of three weeks work experience on the project, with local students experiencing a range of on-site roles to find where they most enjoy working on a construction project!



Getting in touch

Please sign up for the 'latest news' on the project by visiting the website and registering your email:

www.leeds.gov.uk/armleygyratory

If you have questions about the scheme, you can email us at: connectingleeds@leeds.gov.uk

You can also join the conversation on social media by following @ConnectingLeeds on Twitter and Facebook.

We would like to take this opportunity to apologise for any inconvenience and assure you that every effort will be made to keep disruption to a minimum.

Kind regards

The Connecting Leeds Team

